

# MEC's Two-Level Model of "Spatial Presence"



**Contact**

Prof. Dr. Peter Vorderer  
Annenberg School for Communication, University of Southern California  
vorderer@usc.edu

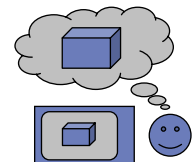
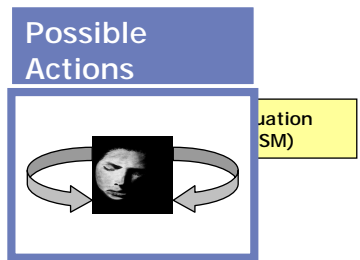
**MEC Website**

[www.ijk.hmt-hannover.de/presence](http://www.ijk.hmt-hannover.de/presence)

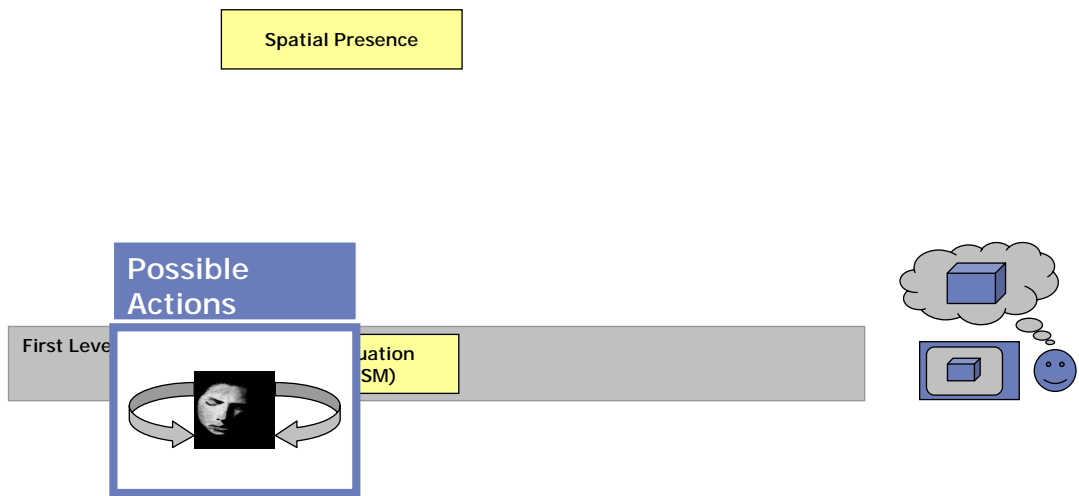


# MEC's Two-Level Model of "Spatial Presence"

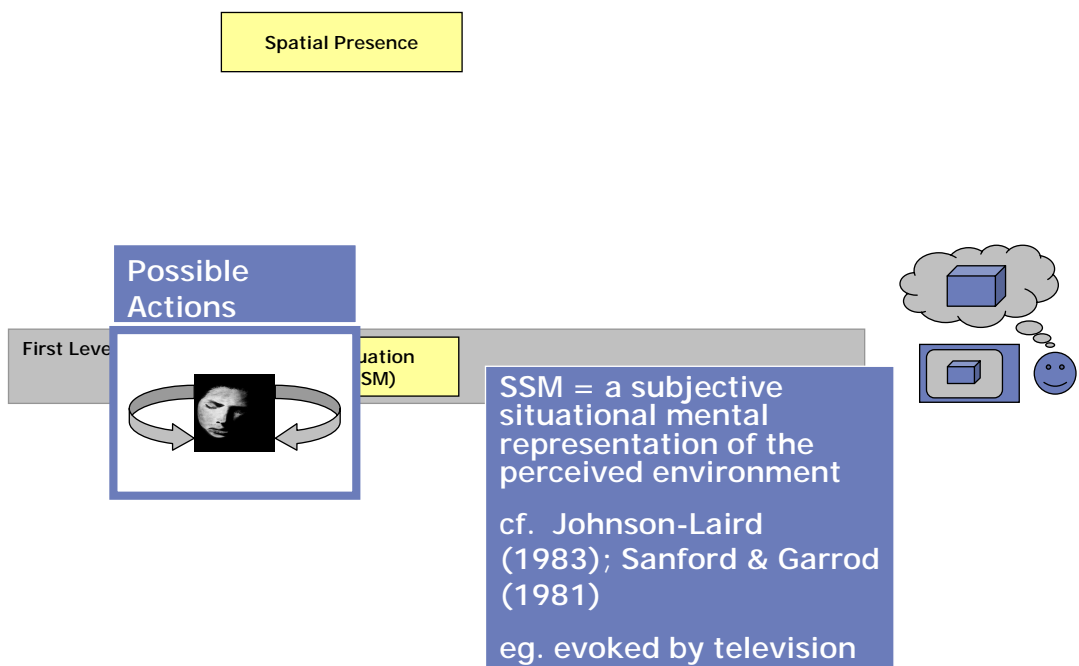
Spatial Presence



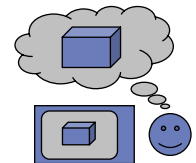
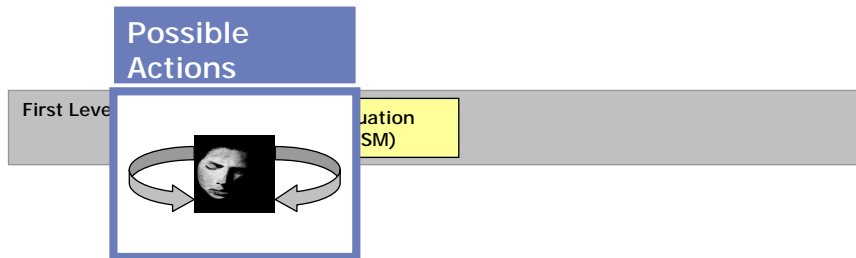
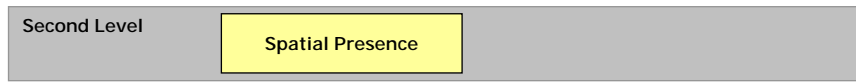
# MEC's Two-Level Model of "Spatial Presence"



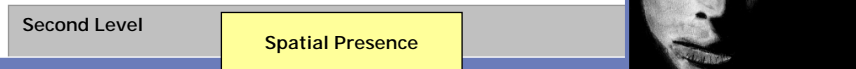
# MEC's Two-Level Model of "Spatial Presence"



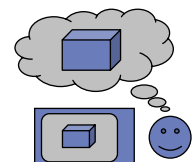
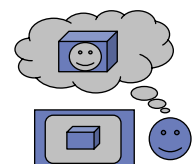
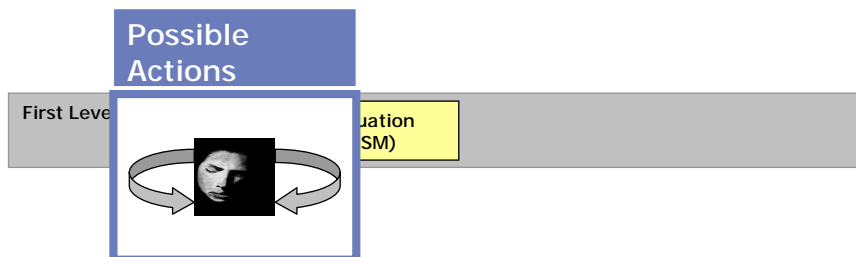
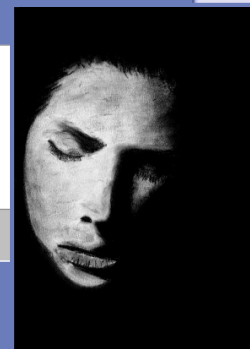
# MEC's Two-Level Model of "Spatial Presence"



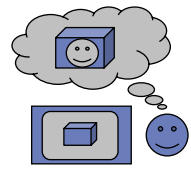
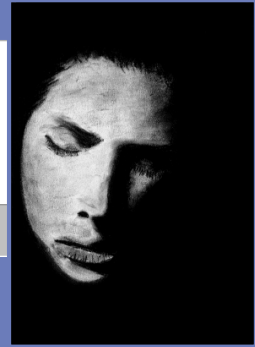
# MEC's Two-Level Model of "Spatial Presence"



Spatial Presence = „the feeling of being there“  
 Belief / experiential state of consciousness to be personally present in a media-bound phenomenal space.



# MEC's Two-Level Model of "Spatial Presence"



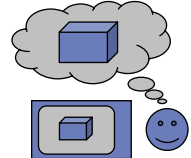
Second Level  
Spatial Presence

Spatial Presence = „the feeling of being there“  
Belief / experiential state of consciousness to be personally present in a media-bound phenomenal space.

Self-Location

Possible Actions

First Level  
Spatial Situation Model (SSM)

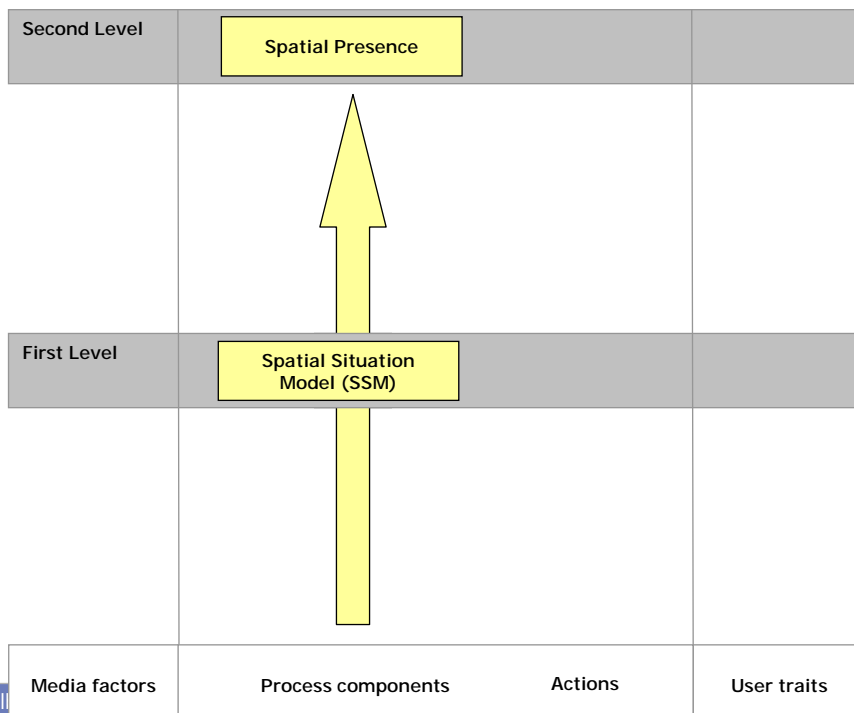


# MEC's Two-Level Model of "Spatial Presence"

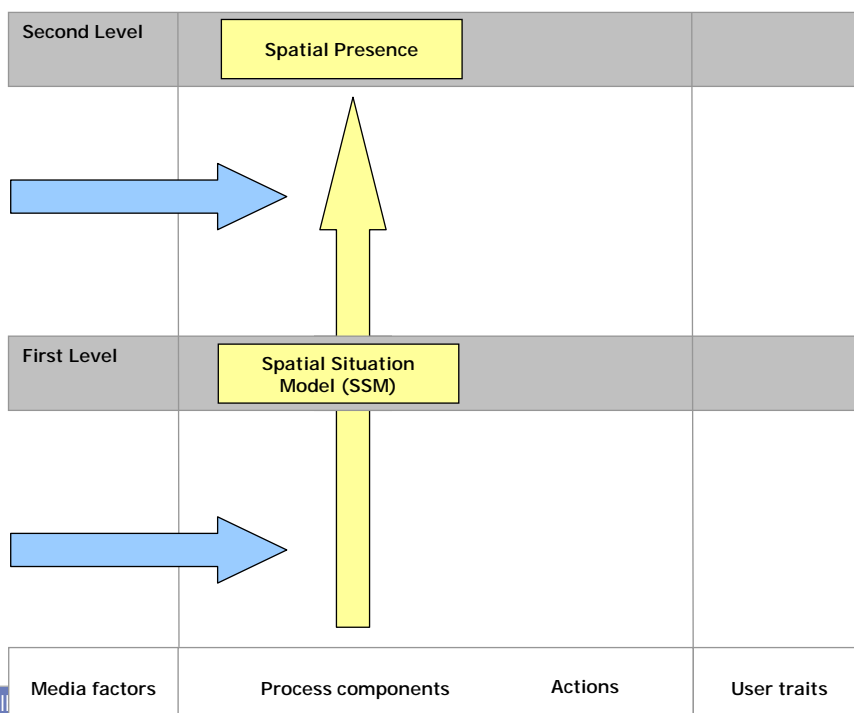


Second Level	Spatial Presence		
First Level	Spatial Situation Model (SSM)		
Media factors	Process components	Actions	User traits

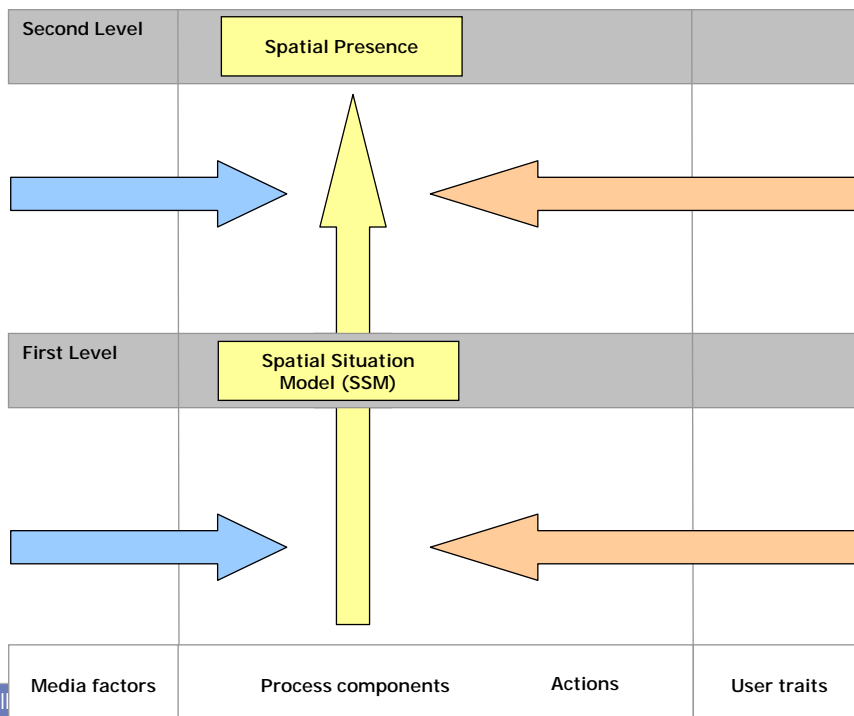
# MEC's Two-Level Model of "Spatial Presence"



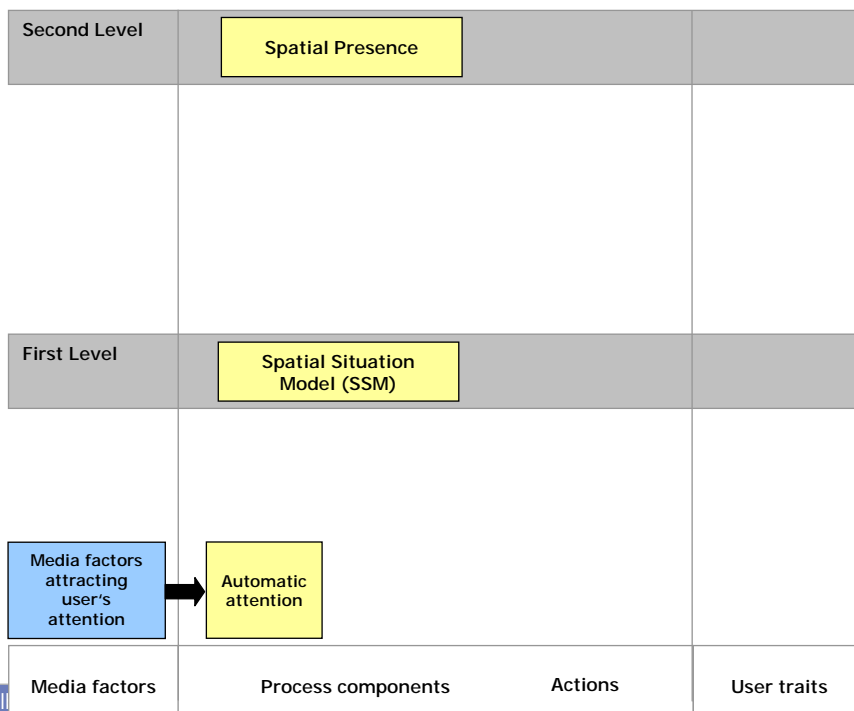
# MEC's Two-Level Model of "Spatial Presence"



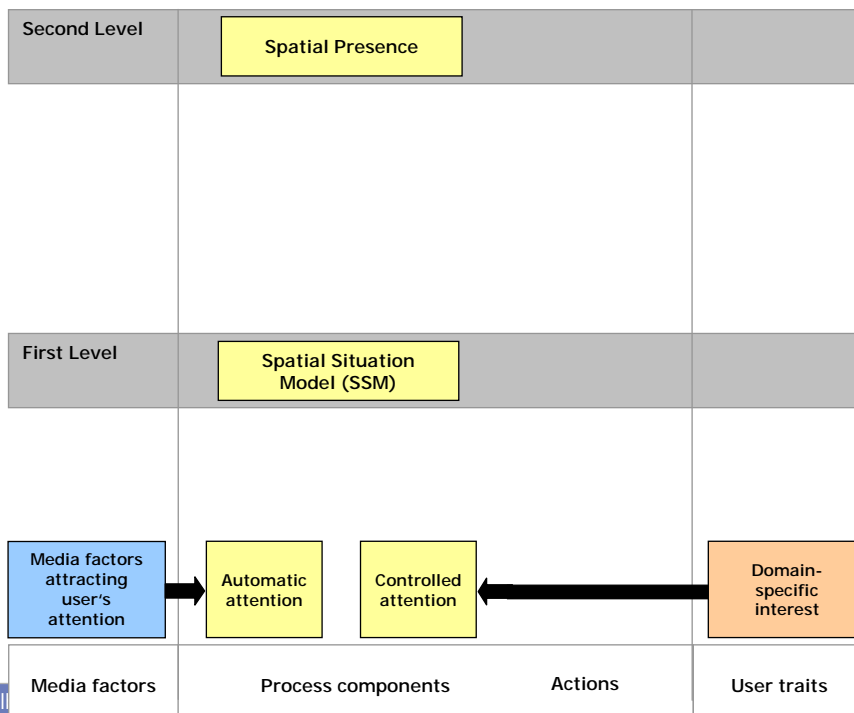
# MEC's Two-Level Model of "Spatial Presence"



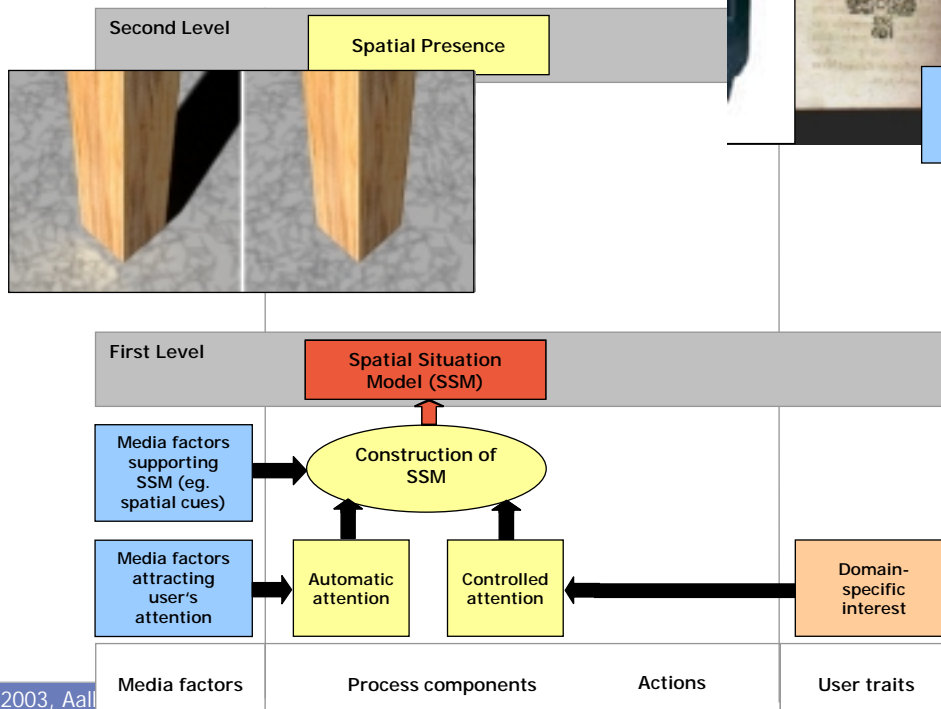
# MEC's Two-Level Model of "Spatial Presence"



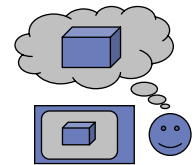
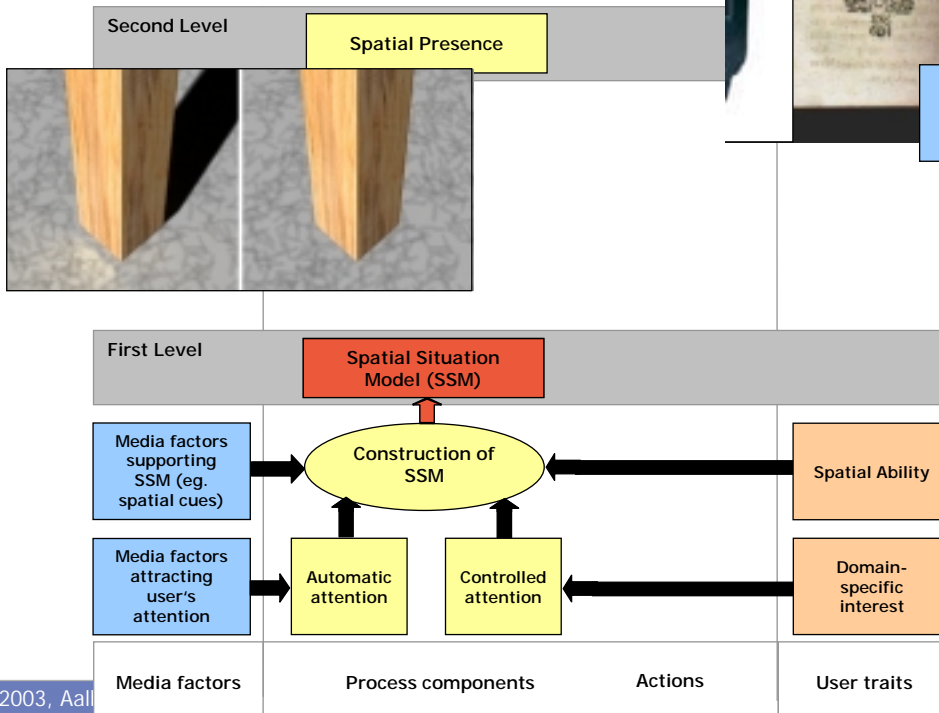
# MEC's Two-Level Model of "Spatial Presence"



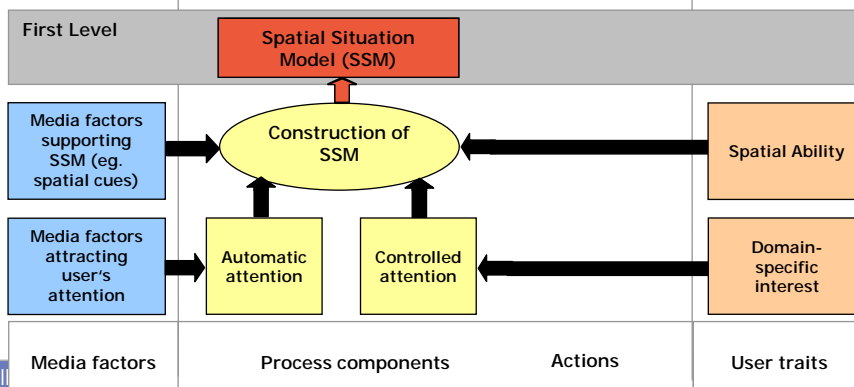
# MEC's Two-Level Model of "Spatial Presence": First Level



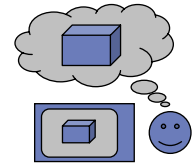
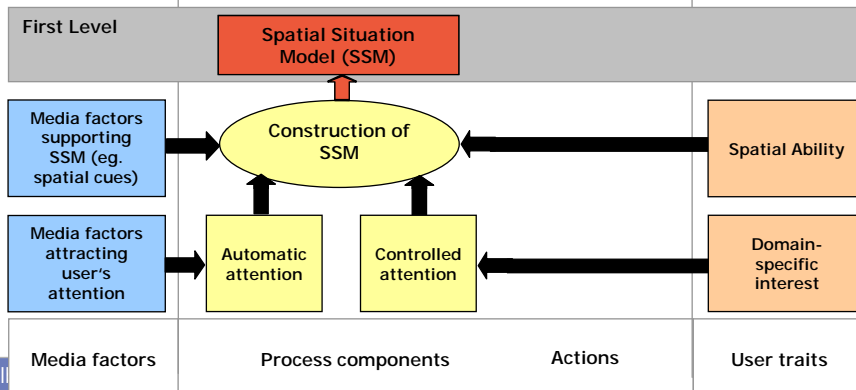
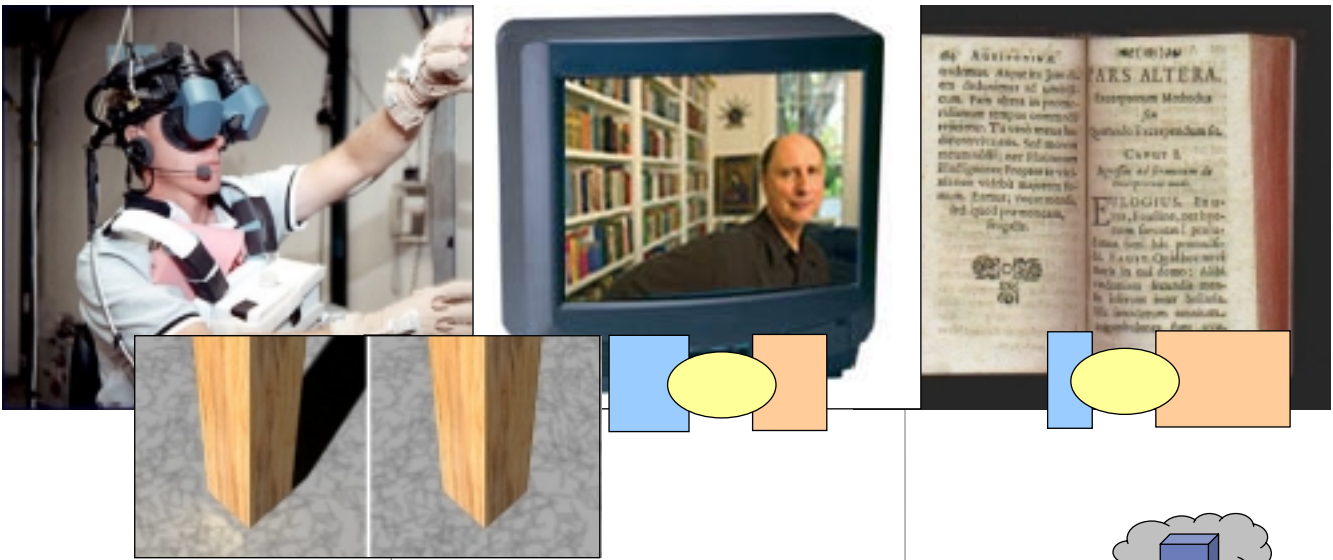
# MEC's Two-Level Model of "Spatial Presence": First Level



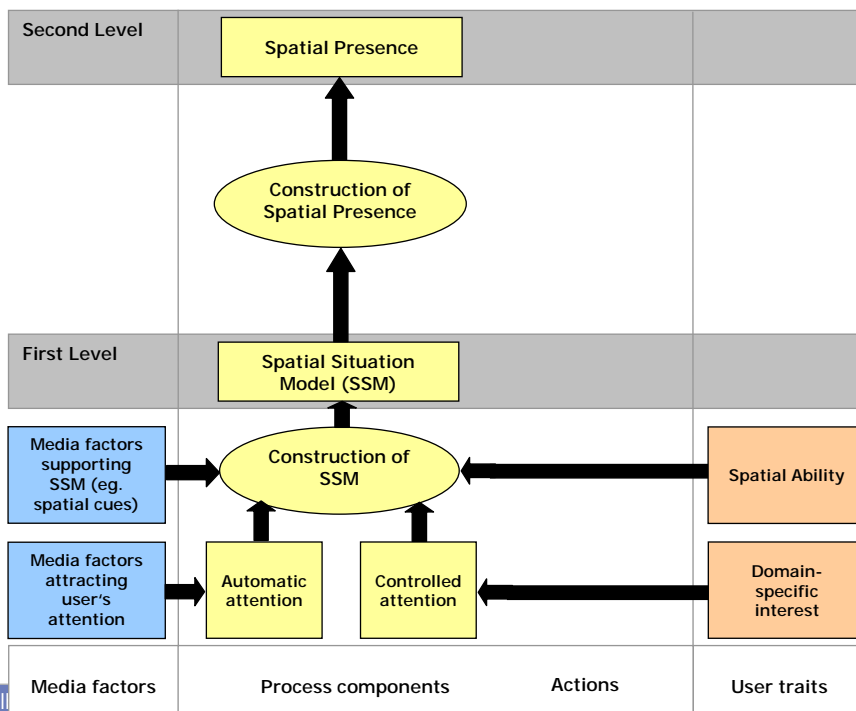
# of t Level



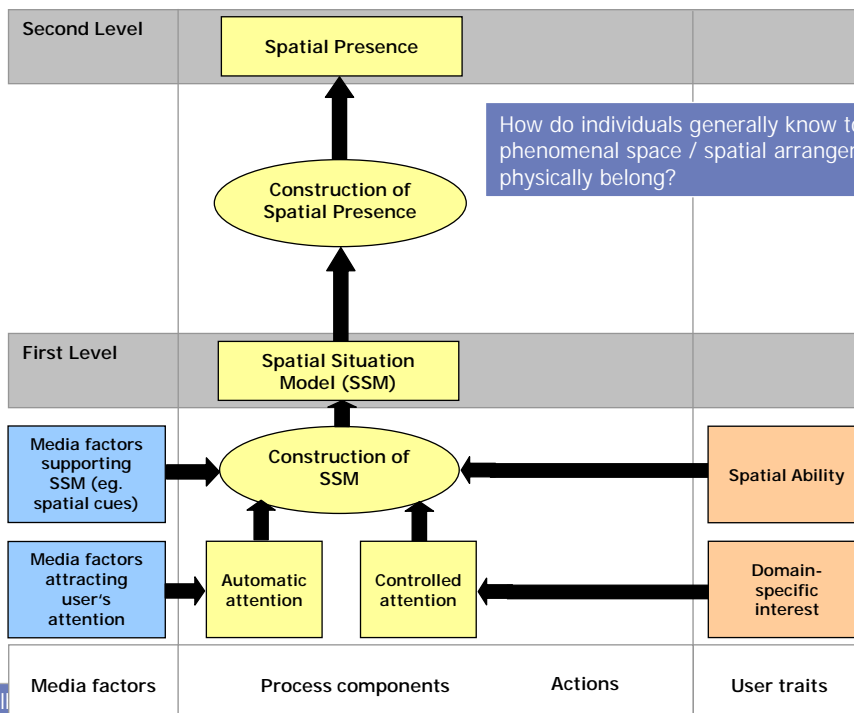




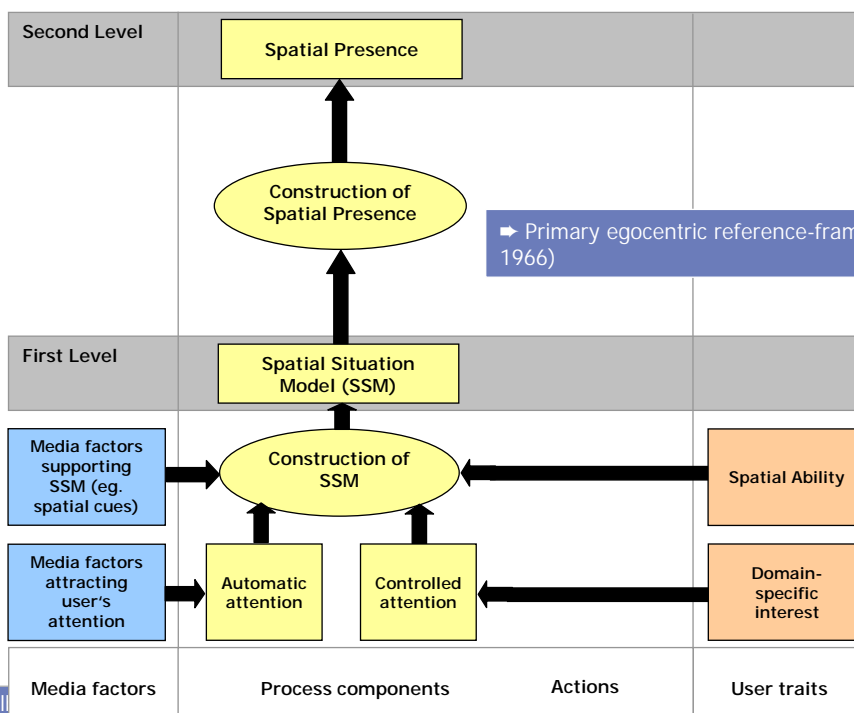
## MEC's Two-Level Model of "Spatial Presence": Second Level



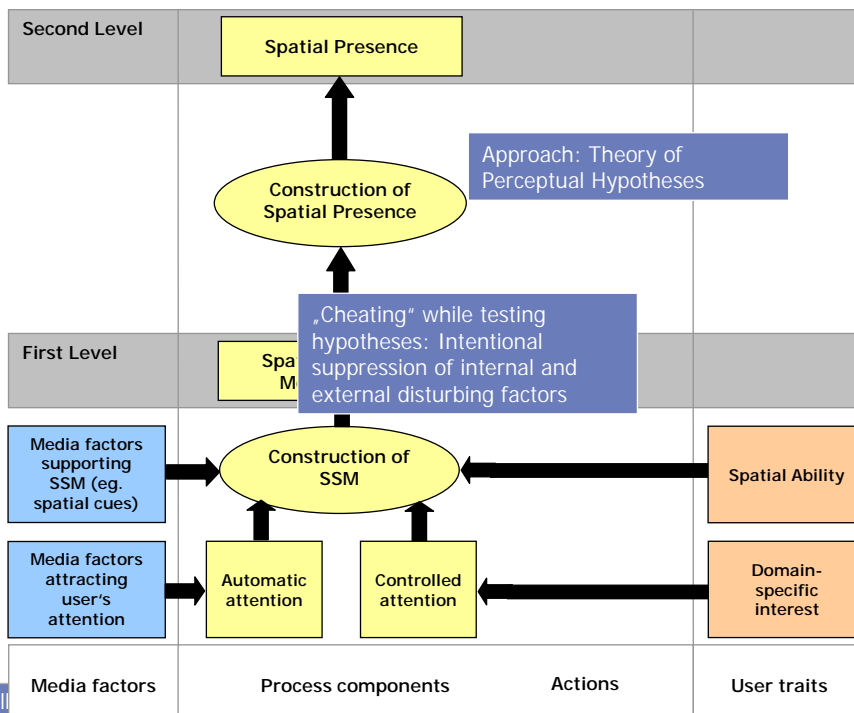
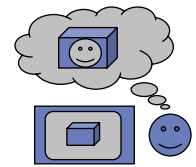
## MEC's Two-Level Model of "Spatial Presence": Second Level



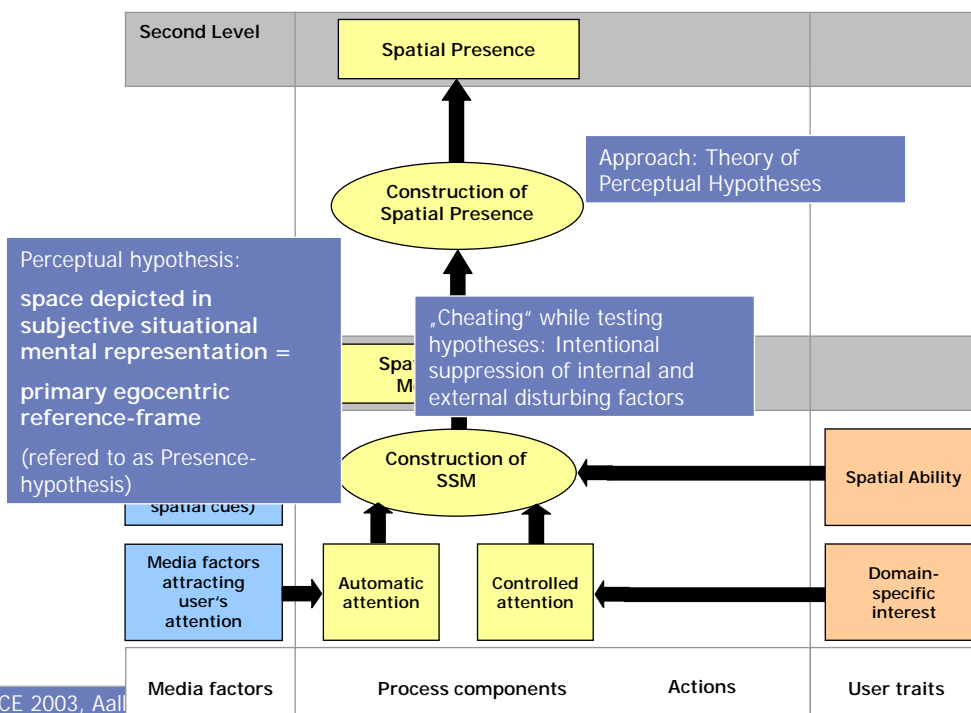
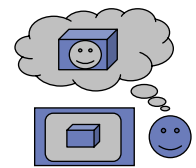
## MEC's Two-Level Model of "Spatial Presence": Second Level



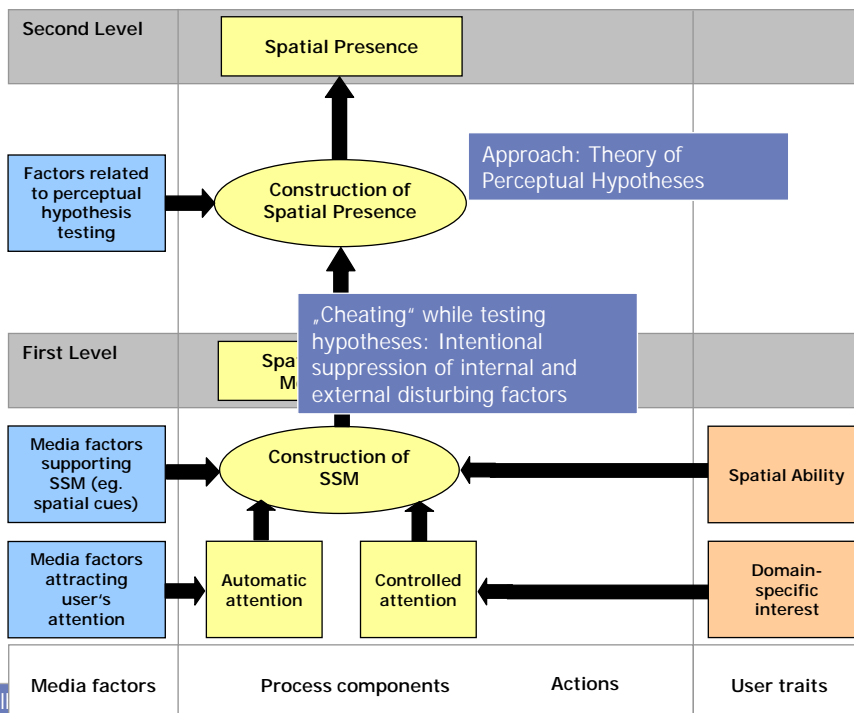
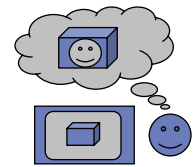
# MEC's Two-Level Model of "Spatial Presence": Second Level



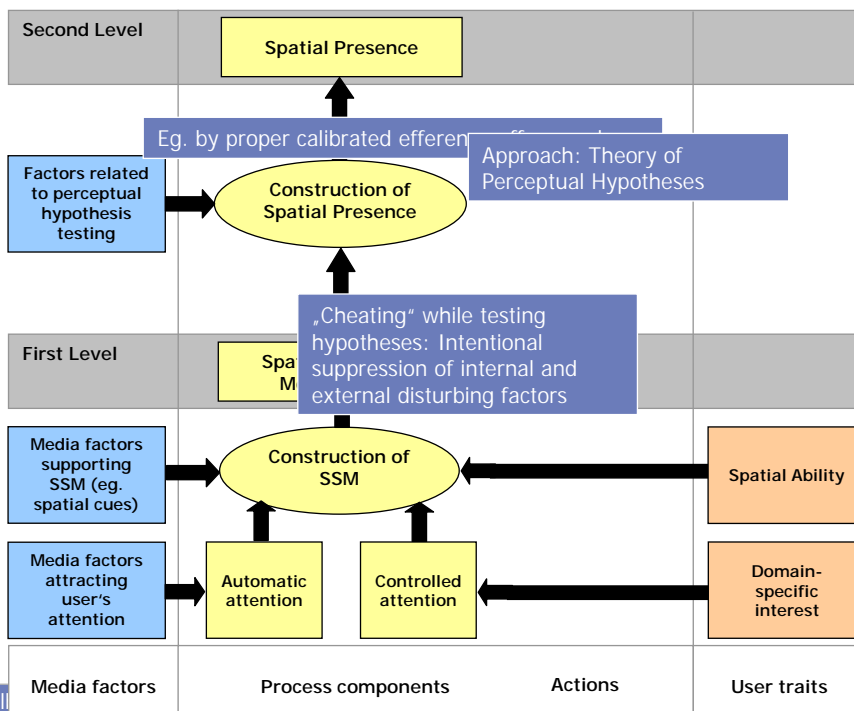
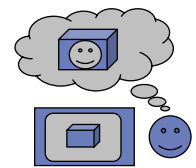
# MEC's Two-Level Model of "Spatial Presence": Second Level



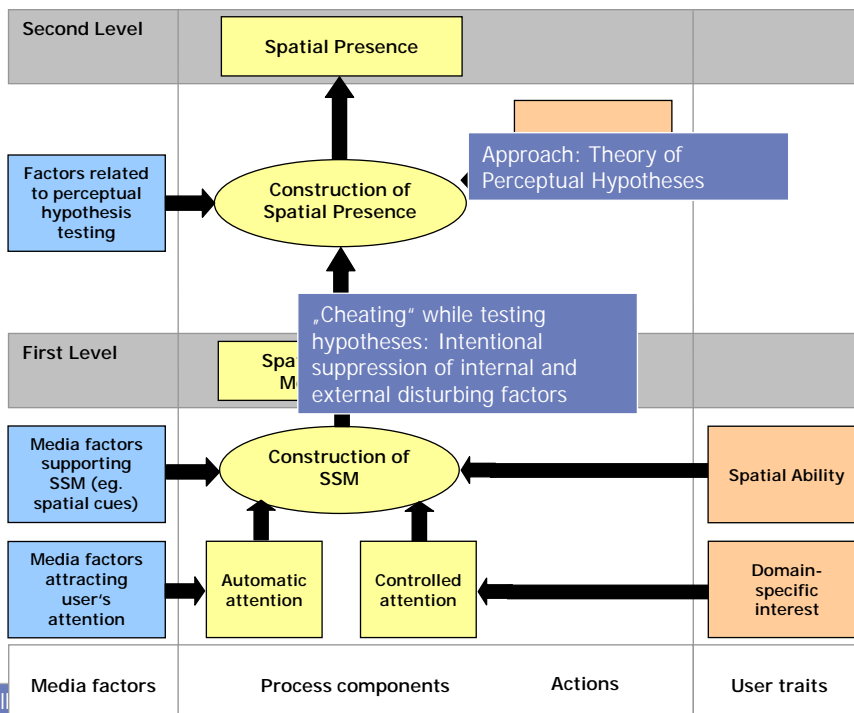
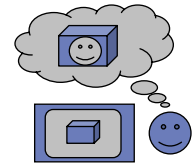
# MEC's Two-Level Model of "Spatial Presence": Second Level



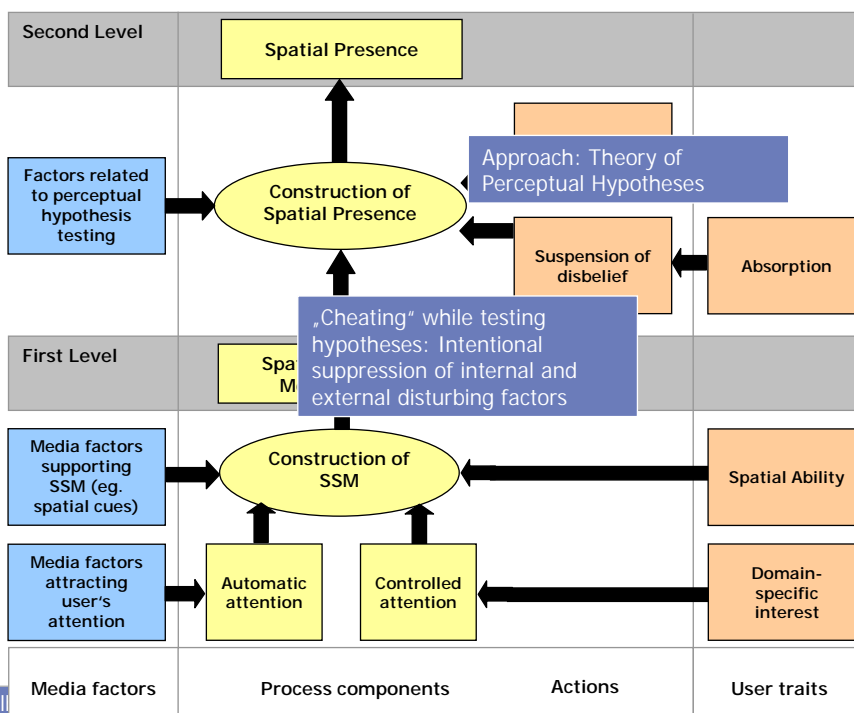
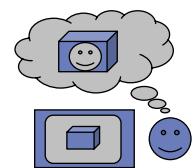
# MEC's Two-Level Model of "Spatial Presence": Second Level



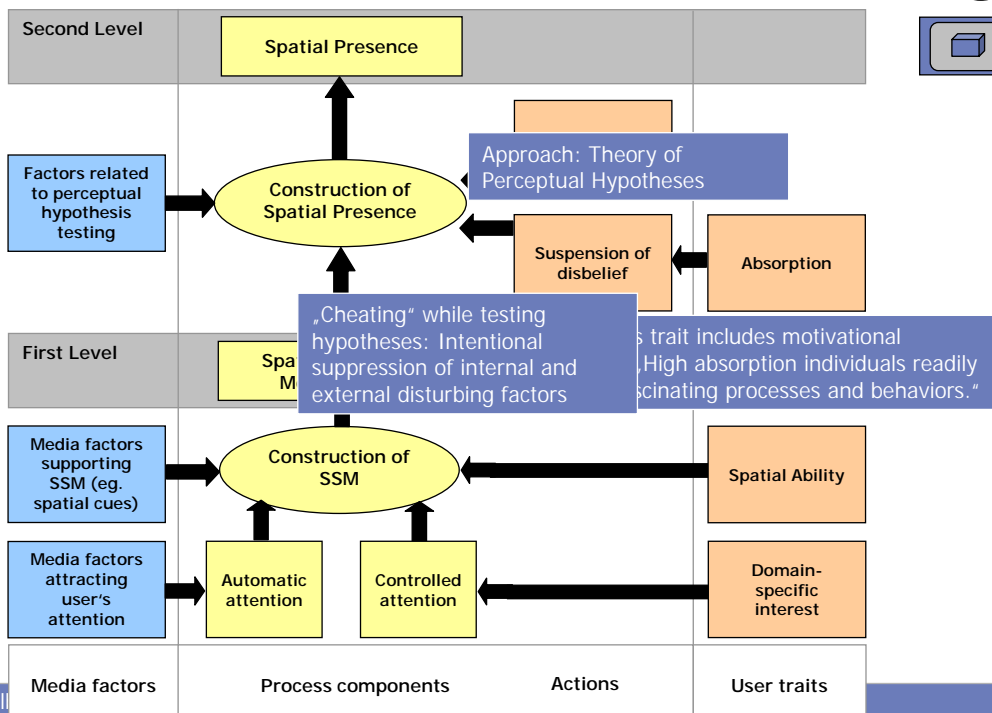
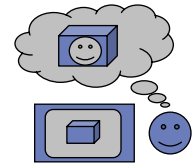
# MEC's Two-Level Model of "Spatial Presence": Second Level



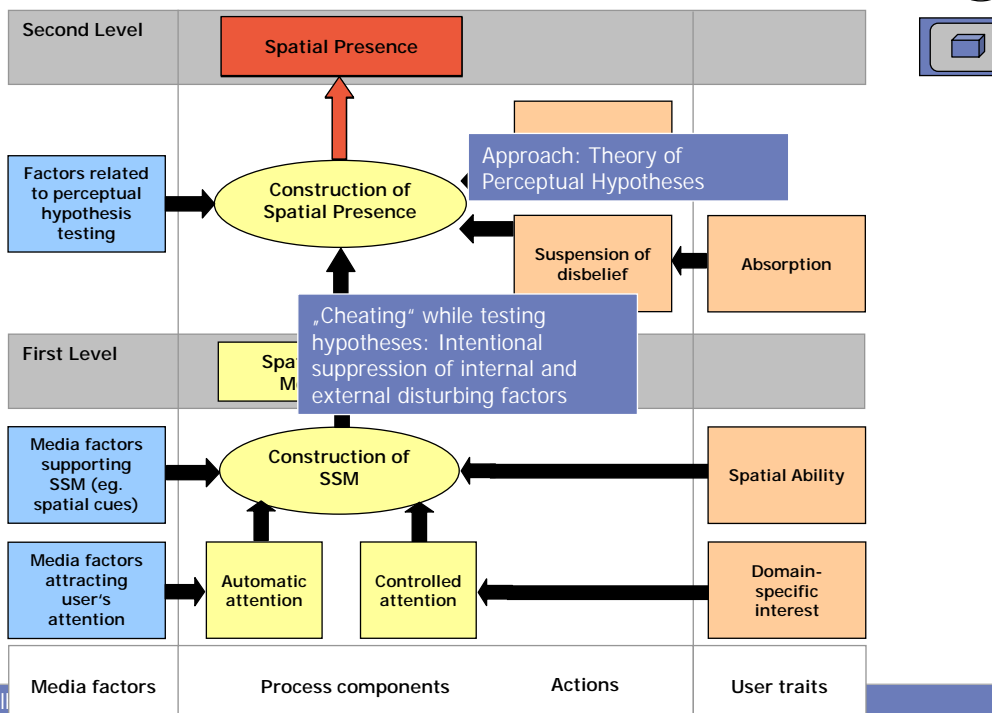
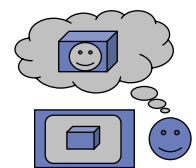
# MEC's Two-Level Model of "Spatial Presence": Second Level



# MEC's Two-Level Model of "Spatial Presence": Second Level



# MEC's Two-Level Model of "Spatial Presence": Second Level





**Thank you for your attention.**

<b>Contact</b>	Prof. Dr. Peter Vorderer (P.I.) vorderer@usc.edu
<b>MEC Team</b>	Werner Wirth, Timo Saari, Feliz Ribeiro Gouveia, Frank Biocca, Lutz Jäncke, Saskia Böcking, Tilo Hartmann, Christoph Klimmt, Holger Schramm, Jari Laarni, Niklas Ravaja, Luis Borges Gouveia, Nunu Rebeiro, Ana Sacau, Thomas Baumgartner & Petra Jäncke
<b>MEC Website</b>	<a href="http://www.ijk.hmt-hannover.de/presence">www.ijk.hmt-hannover.de/presence</a>