



PROPOSING A KNOWLEDGE NETWORK TO ASSIST EDUCATION, TRAINING AND LEARNING

Joaquim Borges Gouveia, bgouveia@fe.up.pt
Luís Gouveia, lmbg@mail.telepac.pt
Francisco Restivo, fjr@fe.up.pt
University of Porto, Faculty of Engineering, GIOTE
R. Bragas, Porto, Portugal

2000-07-05

ITS'2000, Buenos Aires

1



ABSTRACT

- A framework to assist education, learning and training needs
- An infrastructure that deals with structure, billing, security and intellectual property rights (ipr) issues
- Teachers and students play an equal part on the system, both as producers and consumers

JBG, LG, FR 2000

2000-07-05

ITS'2000, Buenos Aires

2



BACKGROUND

- Service operations management
- Supply chain management
- Total quality management
- Decision support system
- Knowledge management
- Information and communication tech
- Consumer focus



NEW FORMS OF COMMUNICATING

- Users are seen as customers, suppliers and buyers of information and knowledge
- System performs the management of an informal network of people, producing and consuming information and multimedia communications



TEACHING, TRAINING AND LEARNING IN THE WEB

- Teaching, training and learning will be, in a close future, economic activities of large importance
- Success depends strongly on a strategy for contents acquisition
- *EFTWeb* project is an innovative form of teaching, training and learning, supporting the interaction of students and tutors on contents and tasks, through the Web



EFTWeb FUNCTIONAL DESCRIPTION

- ASP approach
- Services available for all the users
- Maintenance services to administrate the system usage

Functional description

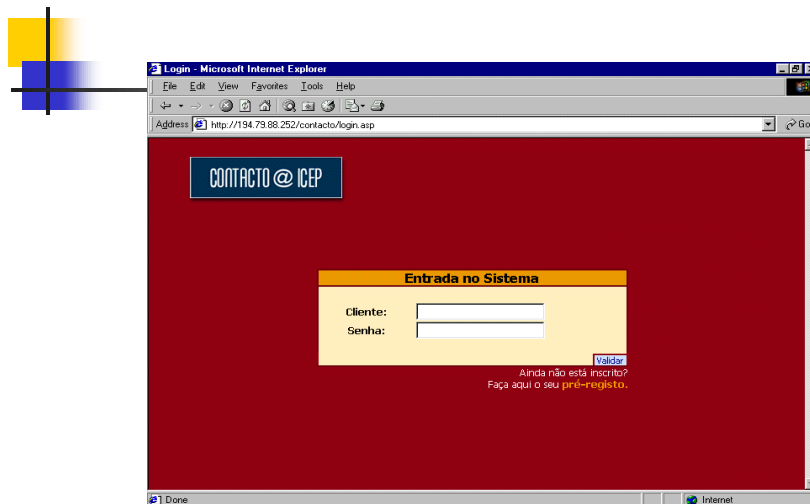
- Entrance in the system
- Initial registration
- Personal area
- Registered guides
- Personal folder
- Search
- Personal information
- Mail
- Chat room
- User profiles

JBG, LG, FR 2000

2000-07-05

ITS'2000, Buenos Aires

7

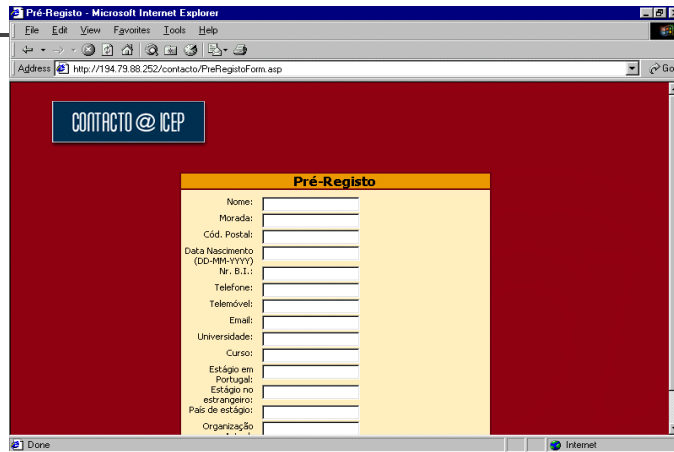


JBG, LG, FR 2000

2000-07-05

ITS'2000, Buenos Aires

8



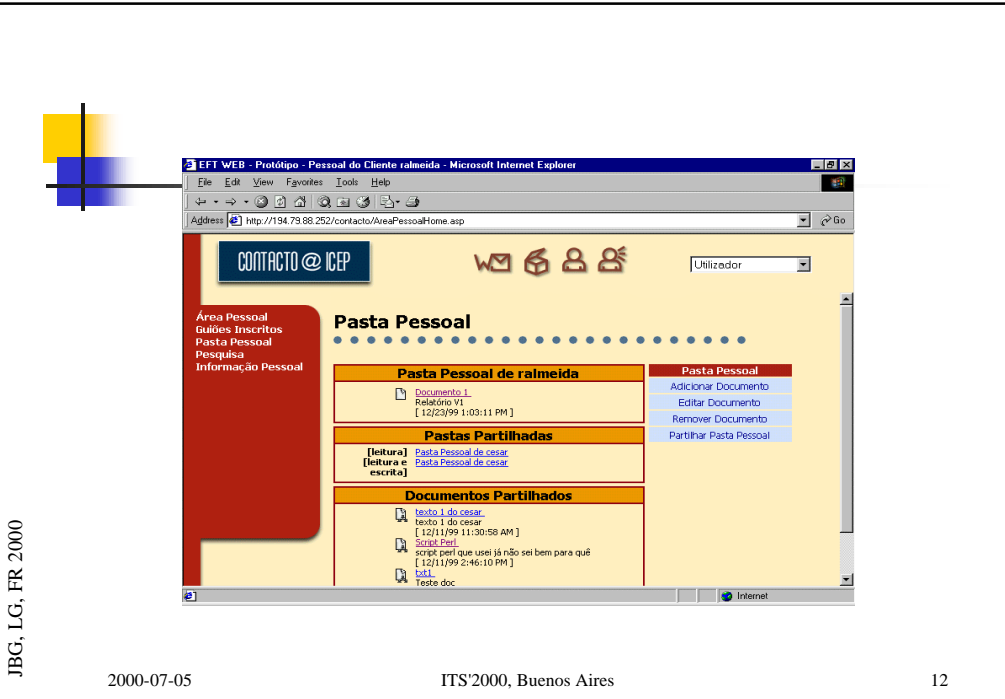


JBG, LG, FR 2000

2000-07-05

ITS'2000, Buenos Aires

11

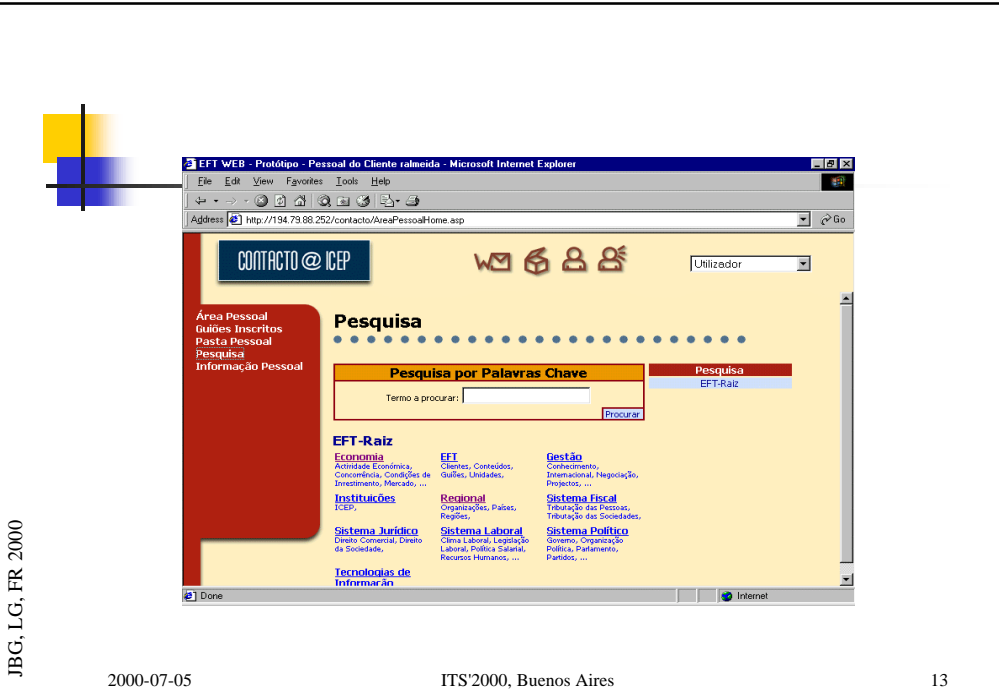


JBG, LG, FR 2000

2000-07-05

ITS'2000, Buenos Aires

12

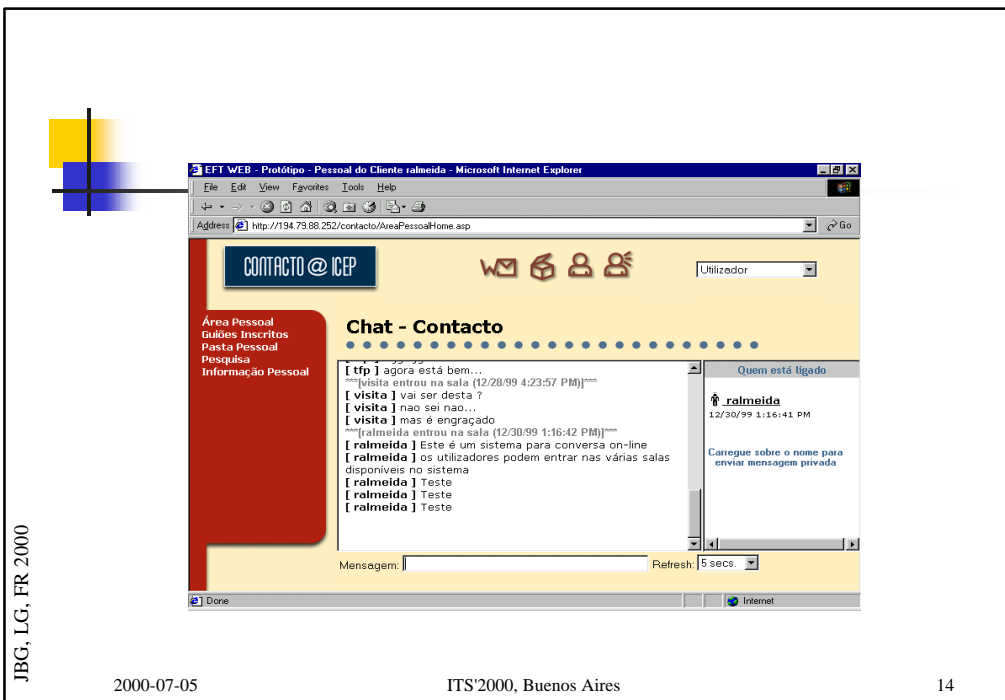


JBG, LG, FR 2000

2000-07-05

ITS'2000, Buenos Aires

13



JBG, LG, FR 2000

2000-07-05

ITS'2000, Buenos Aires

14

Maintenance

- Users
- Guides
- Units
- Contents
- Thesaurus
- System security
- Chat service

CONTACTO @ ICEP

Administrador Geral

Editar Utilizador

| Utilizador | Utilizadores |
|-----------------------------------------------------------------------------------------------------------------|-----------------------|
| [A] [B] [C] [D] [E] [F] [G] [H] [I] [J] [K] [L] [M] [N] [O] [P] [Q] [R] [S] [T] [U] [V] [W] [X] [Y] [Z] [Todos] | Adicionar |
| <input type="checkbox"/> [acardoso] acardoso | Remover |
| <input type="checkbox"/> [acastro] Alberto Castro | Editar |
| <input type="checkbox"/> [apinhei] Alexandre Paulo Mala Pinheiro | Pré-Registos |
| <input type="checkbox"/> [alcajad] Anibal Fernando Ramos Calçada | Atribuir Créditos |
| <input type="checkbox"/> [aagomes] António Augusto Araújo Gomes | Atribuir Competências |

Submeter Limpar Campos

JBG, LG, FR 2000

2000-07-05

ITS'2000, Buenos Aires

17

JBG, LG, FR 2000

2000-07-05

ITS'2000, Buenos Aires

18

JBG, LG, FR 2000

2000-07-05

ITS'2000, Buenos Aires

19

CONCLUSIONS

- *EFTWeb* interface offers an atmosphere of Web navigation, easy to use and supporting context finding
- allows maximum usability for the *EFTWeb* system, turning it into an effective and efficient work tool for students and tutors
- shared folders allow joint contents development between users, with tutor supervision
- much other functionality, that will only be tested with elapsing of the experience with first users

JBG, LG, FR 2000

2000-07-05

ITS'2000, Buenos Aires

20