



EFT Web: an application to support skills trading within education, learning and training environments

Joaquim Borges Gouveia, bgouveia@egi.ua.pt

Luís Gouveia, lmbg@mail.telepac.pt

Francisco Restivo, fjr@fe.up.pt

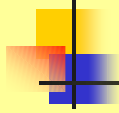
University of Aveiro, SAGEI, GIOTE (Operations Management Research Group)

Campus Universitário de Santiago, Aveiro, Portugal



ABSTRACT

- A framework to assist education, learning and training needs
- An infrastructure that deals with structure, billing, security and intellectual property rights (ipr) issues
- Teachers and students play an equal part on the system, both as producers and consumers



BACKGROUND

- Service operations management
- Supply chain management
- Total quality management
- Decision support system
- Knowledge management
- Information and communication tech
- Consumer focus



NEW FORMS OF COMMUNICATING

- Users are seen as customers, suppliers and buyers of information and knowledge
- System performs the management of an informal network of people, producing and consuming information and multimedia communications



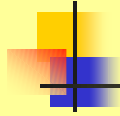
TEACHING, TRAINING AND LEARNING IN THE WEB

- Teaching, training and learning will be, in a close future, economic activities of large importance
- Success depends strongly on a strategy for contents acquisition
- *EFTWeb* project is an innovative form of teaching, training and learning, supporting the interaction of students and tutors on contents and tasks, through the Web



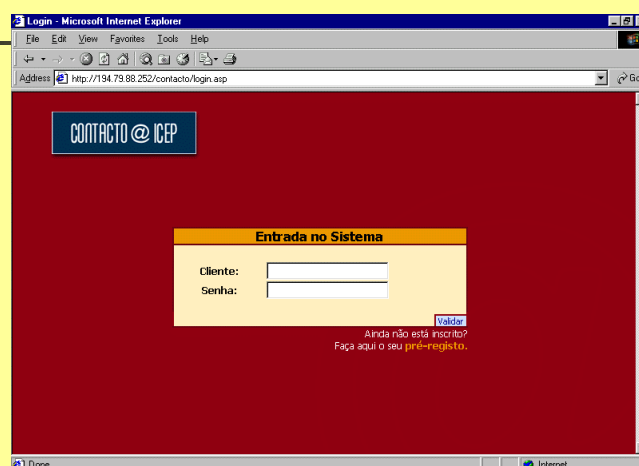
EFTWeb FUNCTIONAL DESCRIPTION

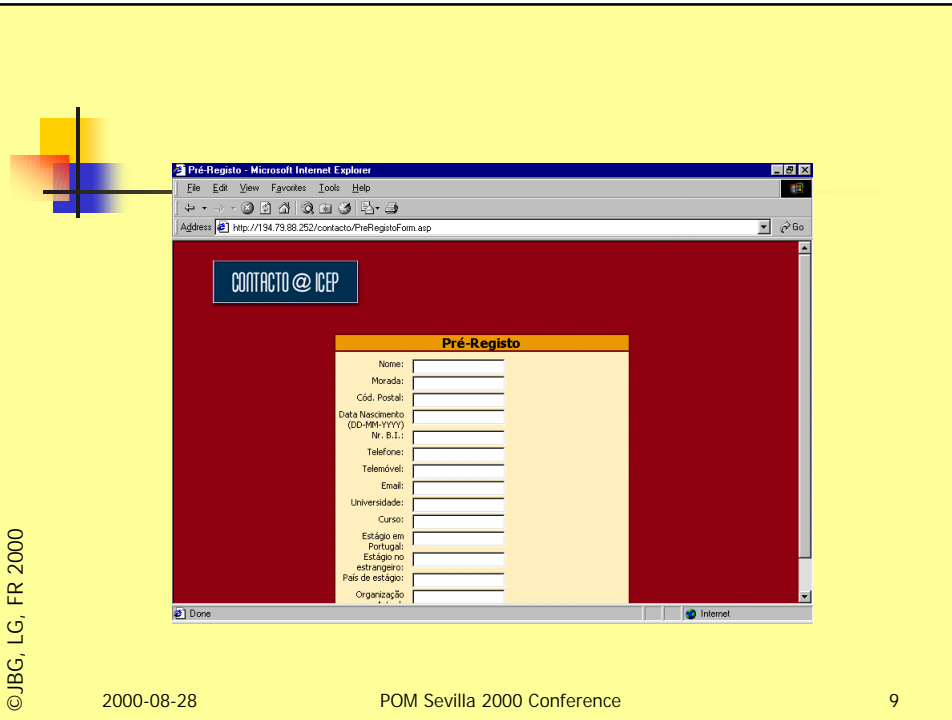
- ASP approach
- Services available for all the users
- Maintenance services to administrate the system usage



Functional description

- Entrance in the system
- Initial registration
- Personal area
- Registered guides
- Personal folder
- Search
- Personal information
- Mail
- Chat room
- User profiles





© JBG, LG, FR 2000

2000-08-28

POM Sevilla 2000 Conference

9



© JBG, LG, FR 2000

2000-08-28

POM Sevilla 2000 Conference

10

©JBG, LG, FR 2000

2000-08-28

POM Sevilla 2000 Conference

11

©JBG, LG, FR 2000

2000-08-28

POM Sevilla 2000 Conference

12

© JBG, LG, FR 2000

2000-08-28

POM Sevilla 2000 Conference

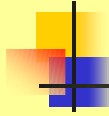
13

© JBG, LG, FR 2000

2000-08-28

POM Sevilla 2000 Conference

14



Maintenance

- Users
- Guides
- Units
- Contents
- Thesaurus
- System security
- Chat service



CONTACTO @ ICEP

Administrador Geral

Home
Utilizadores
Guiões
Unidades
Conteúdos
Thesaurus
Segurança
Chat

Editar Utilizador

Utilizador	Utilizadores
[A][B][C][D][E][F][G][H][I][J][K][L][M][N][O][P][Q][R][S][T][U][V][W][X][Y][Z][Espaço]	Adicionar
<input type="checkbox"/> [acardoso] acardoso	Remover
<input type="checkbox"/> [acastro] Alberto Castro	Editar
<input type="checkbox"/> [apinho] Alexandre Paulo Mala Pinheiro	Pré-Registos
<input type="checkbox"/> [afcalçad] Anibal Fernando Ramos Calçada	Atribuir Créditos
<input type="checkbox"/> [aagomes] António Augusto Araújo Gomes	Atribuir Competências

Submeter Limpar Campos

©JBG, LG, FR 2000

2000-08-28

POM Sevilla 2000 Conference

17

©JBG, LG, FR 2000

2000-08-28

POM Sevilla 2000 Conference

18

© JBG, LG, FR 2000

2000-08-28

POM Sevilla 2000 Conference

19

CONCLUSIONS

- *EFTWeb* interface offers an atmosphere of Web navigation, easy to use and supporting context finding
- allows maximum usability for the *EFTWeb* system, turning it into an effective and efficient work tool for students and tutors
- shared folders allow joint contents development between users, with tutor supervision
- much other functionality, that will only be tested with elapsing of the experience with first users

© JBG, LG, FR 2000

2000-08-28

POM Sevilla 2000 Conference

20